



search

Bring Spring Into Your Home This Winter



By *Christina Schmohl*, GalTime Associate Producer
on Thursday, February 9, 2012

Have winter blues gotten the best of your home? Spring up your décor this winter with a few simple expert tips to bring the light back in.



Play with color

HGTV Design Star Finalist *Cathy Hobbs* says springing up your rooms with brightly colored wall paint or accessories. Hobbs explains that colors can be bold or muted with gray to match other winter décor.



white, ivory, or metallic silver spray paint in brands that can adhere to multiple different surfaces, including metal and plastics.



Winokur also suggests looking for light, sheer window treatments, which she explains can be bought at a reasonable price at Target with a coupon.

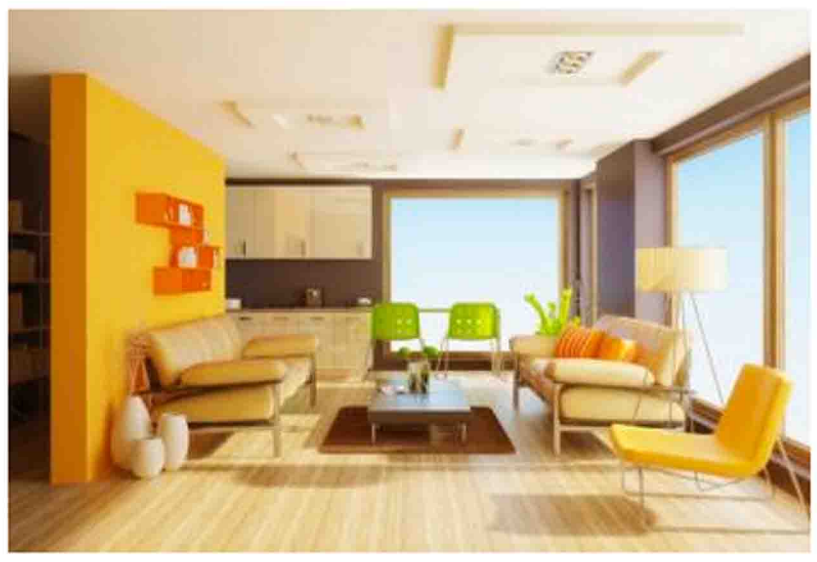


Designer Mary Jane Rossi of *Vignettes Room Redesign* suggests rolling up heavy area rugs and replacing them with the more springy material, rattan. Additionally, Rossi recommends swapping woolen throws for lace pieces and copper flowerpots and ornaments for glass or ceramic ones.

Have winter blues gotten the best of your home? Spring up your décor this winter with a few simple expert tips to bring the light back in.

Play with color

HGTV Design Star Finalist *Cathy Hobbs* says the first step in springing up your home is infusing your rooms with brightly colored wall paint or accessories. Hobbs explains that colors can be bold or muted with gray to match other winter décor.



According to Hobbs, "Some of the trends that I am seeing right now are deep oranges, turquoise and shades of amethyst... all of these colors look fantastic with traditional winter colors such as charcoal gray, black and chocolate..." Savings Expert *Andrea Woroch* adds that wall decals are an easy and inexpensive way to add a punch of color to any room. She says that for as little as four dollars at *Home Depot*, you can purchase light color spray paints that you can use to quickly transform dark or old furniture. For the best results, *Woroch* suggests looking for

white, ivory, or metallic silver spray paint in brands that can adhere to multiple different surfaces, including metal and plastics.